

State of Wyoming Corner Record

(In compliance with the *CORNER PERPETUATION AND FILING ACT*, Wyoming Statutes, 1977, Section 36-11-101, et. seq., and the Rules and Regulations of the Board of Registration for Professional Engineers and Professional Land Surveyors)

Reverse side of this form may be used if more space is needed.

Record of original survey and citation of source of historical information (if corner is lost or obliterated). Description of corner monumentation evidence found and/or monument and accessories established to perpetuate the location of this corner. Sketch of relative location of monument, accessories, and reference points with course and distance to adjacent corner(s) (if determined in this survey). Method and rationale for reestablishment of lost or obliterated corner.

G.L.O. Notes: U.S. Deputy Surveyor, John B. Thomas, September 15, 1870; 40.30 Chains... Set Granite Boulder 16 x 10 x 6 for 1/4 Sec Cor.

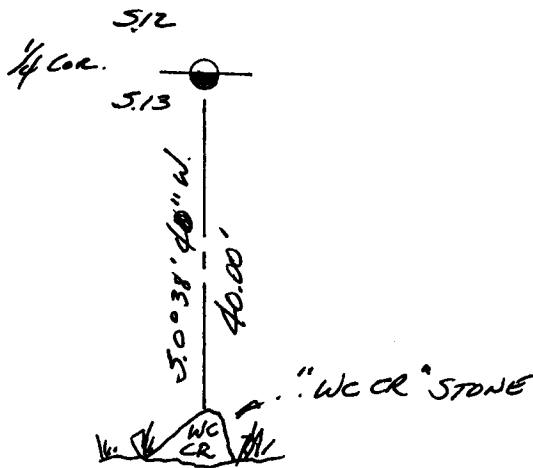
Subsequent Record: Laramie County Engineers Office, Laramie County Road C.R. 5-87, Laramie County Roads Field Book No. 11, Page 56, circa October 12, 1924, indicates "N 1/4 Cor 13-15-67 Stone in place Burried Same Set WCCR 40' N & S".

Found: Two stones, firmly set and marked WCCR, 40.00' North and South of a found 2" aluminum cap.

Set: 5' steel fence post witness 1' north.
See back of this sheet for ties to adjacent monuments.

Aluminum Cap Markings

SSS
12
13
1995
LS 2500



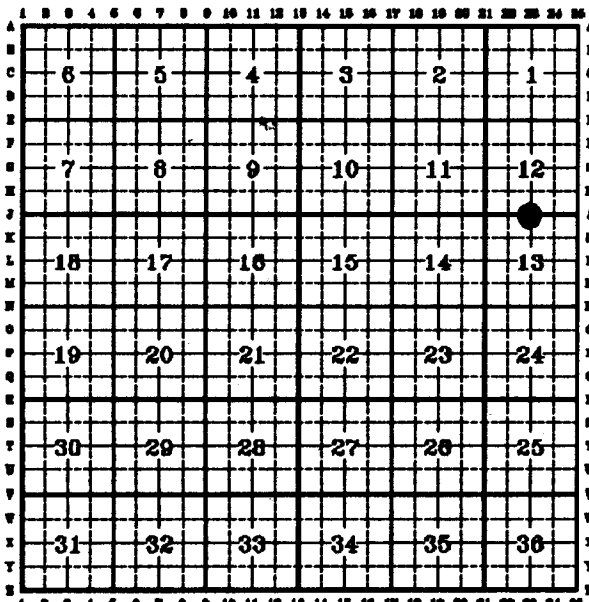
Sketched Reference Point Tie to Corner

LARAMIE COUNTY CLERK
CHEYENNE, WY.
96 MAR 1 PM 12 14

178474

Date of Field Work: 30, Jan., 1996 Office Reference: Job No. 2-1930.95

CROSS INDEX DIAGRAM

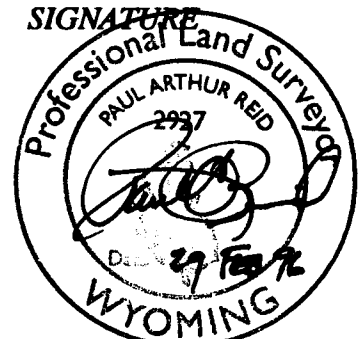


Firm/Agency, Address

Paul A. Reid, A.V.I.p.c.
2035 Westland Road
Cheyenne, WY 82001

Telephone Number:
(307)-634-6017

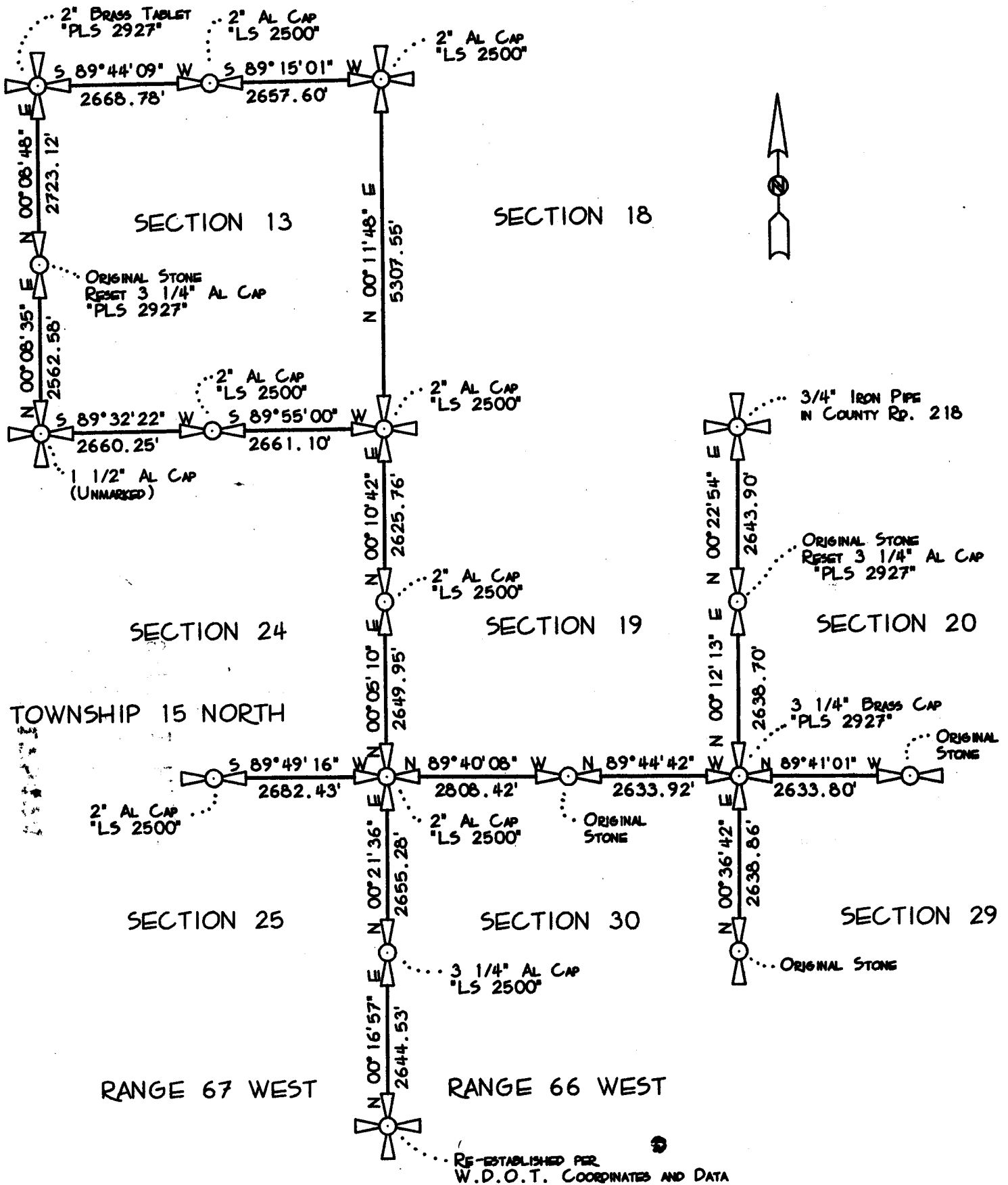
This corner record was prepared by me or under my direction and supervision.
SEAL & SIGNATURE



Corner Name: North 1/4 Section: 13 T 15N R 67W; 6TH P.M. Cross-Index No.: J-23

SBRPEPLS/PLSW: March 1994

BASIS OF BEARINGS: BEARINGS ARE GRID AND BASED UPON THE USE OF THE TRIMBLE GPS TOTAL STATION SYSTEM AND WGS 84 DATUM. THE ORIGIN BEING LOCATED @ A LOCAL CONTROL POINT BEING A 1 1/2" ALUMINUM CAP MARKED "CP WARREN" AT 41° 15' 28.68311"N LATITUDE AND 104° 49' 23.61968"W LONGITUDE AND BEING APPROXIMATELY 1,320' SOUTH AND 1340' EAST OF THE NW CORNER OF SECTION 19, T. 15N., R. 66W., 6TH P.M.



SCALE 1" = 2000'